



Jenkins
IRON & STEEL

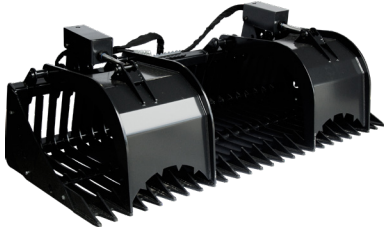


UNITED STATES CUSTOMER CATALOG

HEAVY DUTY SKID STEER
& TRACTOR LOADER ATTACHMENTS

2021 RETAIL
PRICING

LONG PRAIRIE, MINNESOTA • WWW.JENKINSIRON.COM • 1 855 732-3843



Skeleton Grapple

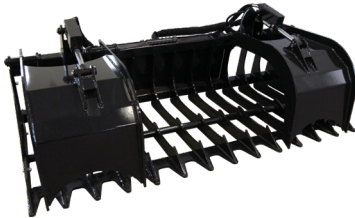
- » bolt on side plates
- » 3" spacing between teeth
- » fully greasable pivot points
- » hydraulic covers included

Single Grapples

48", 62"

Double Grapples

62", 68", 74", 78", 84"



Debris Grapple

- » 1/2" material
- » 1/2" hardened cutting edge
- » 6" spacing between teeth
- » hydraulic covers included

Sizes

64", 72", 78", 84"



Brush Grapple

- » 3/4" material thickness
- » 2 - 3000lb hydraulic cylinders
- » replaceable pin on digging teeth

Sizes

66", 76", 86"

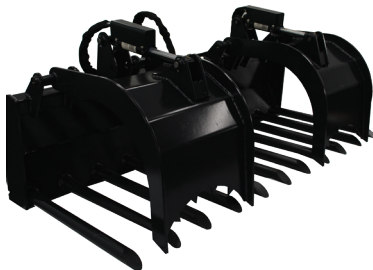


Super Duty Split Brush Grapple

- » independent grapple arms
- » 3/4" material thickness
- » 2 - 3000lb hydraulic cylinders
- » replaceable pin on digging teeth

Sizes

76", 86"



Tine Grapple

- » 2 1/4" round tines
- » 1/2" grapple claw thickness
- » 4" spacing between tines
- » hydraulic covers included

Sizes

63", 70", 78", 83", 88"



Earth Auger

- » 2" hex drive unit
- » self centering
- » heavy duty commercial frame
- » combo kits available

Bits

4", 6", 9", 12", 15", 18", 20",
24", 30", 36"

Auger Extension

2', 3', 4'

Combo Kits (Drive & Bits)

9" & 12", 9" & 18", 12" &
18", 9" 12" & 18"



Snow Bucket

- » 3' tall, 3 1/2' deep for high volume
- » 3/4" reversible bolt on cutting edge

Sizes

6', 7', 8', 9', 10', 12'



Snow Pushers

- » hardened steel cutting edge
- » free floating skid plates
- » optional back drag (BD)
- » high volume screen (HVS)
- » rubber edge also available (RE)

Snow Pusher

7', 8', 10'

Back Drag

7', 8', 10'

High Volume Screen

7', 8', 10'



Deluxe Snow Pusher

- » oscillating quick attach plate
- » full trip cutting edge
- » free floating sides
- » Optional high volume screen or back drag

Deluxe Snow Pusher

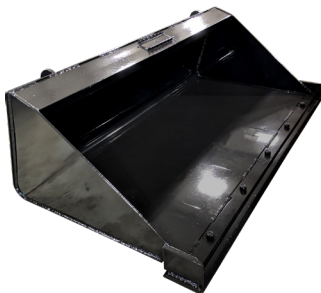
6', 8', 10'

Back Drag

6', 8', 10'

High Volume Screen

6', 8', 10'



Landscape Bucket

- » 3/4" reversible bolt on cutting edge
- » 3/16" bucket material
- » exact yardage bucket

Sizes

1/2 yd (58"), 1 yd (62")



Rock Bucket

Sizes

62", 68", 74", 78", 84"

- » 3/8" material
- » 1/2" hardened cutting edge
- » 3" spacing between teeth



Low Profile Dirt Bucket

Sizes

62", 68", 74", 78", 84"

- » heavy duty 3/4" cutting edge
- » 3/16" bucket material

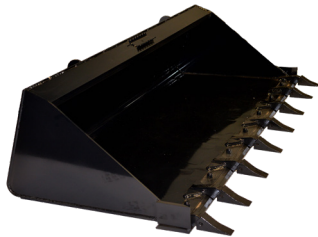


HD Low Profile Dirt Bucket

Sizes

62" HD, 68" HD, 74" HD, 78" HD, 84" HD, 96" HD

- » heavy duty 3/4" cutting edge
- » 1/4" bucket material

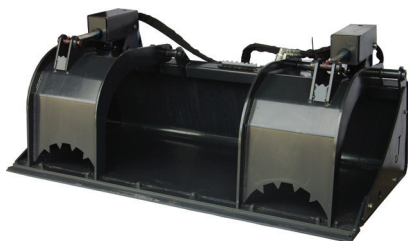


HD Low Profile Dirt Bucket with Teeth

Sizes

62" HD, 68" HD, 74" HD, 78" HD, 84" HD, 96" HD

- » heavy duty 3/4" cutting edge
- » 1/4" bucket material
- » pin on replaceable teeth



HD Low Profile Grapple Bucket

Sizes

62", 68", 74", 78", 84"

- » 3/16" bucket material
- » 3/4" reversible bolt on cutting edge
- » removable bolt on side plates
- » hydraulic covers included



Hi Capacity Grapple

Sizes

6', 7', 8'

- » 3/16" bucket material with 5/16" end plates
- » extremely high volume
- » 80" opening



4 in 1 Bucket

Sizes

72", 78", 82"

- » used for dozing, land leveling, grapping, dumping etc
- » 3 reversible, 3/4" replaceable cutting edges
- » can be fitted with replaceable tip excavator teeth



4 in 1 Bucket w/ Teeth

Sizes

72", 78", 82"

- » used for dozing, land leveling, grapping, dumping etc
- » 3 reversible, 3/4" replaceable cutting edges
- » pin on replaceable teeth



High Dump Bucket

Sizes

62", 68", 74", 78", 84"

- » 51" increased dump height
- » 3/4" reversible bolt on cutting edge
- » screening in back for visibility



Pallet Forks

- » walk through style for easy access to loader
- » adjustable forks rated at 5500 lbs
- » manually adjustable

Carriage x Forks

4'x4', 4'x5', 4'x6', 5'x4', 5'x5',
5'x6', 6'x4', 6'x5', 6'x6'



Hydraulic Sliding Pallet Forks

- » forks rated at 5500 lbs
- » hydraulic powered adjusting forks
- » walk through style for easy access to loader

Carriage x Forks

4'x4', 4'x5', 4'x6', 5'x4', 5'x5',
5'x6', 6'x4', 6'x5', 6'x6'



Bale Spear

- » 49" or 39" German spears
- » heavy duty square box frame
- » modified to fit a variety of tractor loader models

Configurations

2 Prong 49" Spears, 3 Prong Sgl. Round, 4 Prong Dbl. Round 49" Spears, 4 Prong Sq. Bales

Replacement Spears

39" Spears, 39" Spear, 49" Spear



Backhoe

- » 6.5' or 8.5' dig depth
- » 12" or 18" wide HD bucket
- » replaceable pin on teeth
- » optional mechanical thumb for gripping debris

Depth w/ Bucket

6.5' w/ 9", 6.5' w/ 12", 6.5' w/ 18", 6.5' w/ 24", 8.5' w/ 9", 8.5' w/ 12", 8.5' w/ 18", 8.5' w/ 24"

Bucket

9" Bucket, 12" Bucket, 18" Bucket, 24" Bucket



Trencher

- » double standard ABF - tooth in every available position
- » welded teeth w/ cemented carbide edges
- » 1/2 rock & frost - half teeth are conical carbide
- » optional cleaner tool available

Standard Chain

24"x10", 24"x12", 36"x6",
36"x8", 36"x10", 36"x12",
42"x6", 42"x8", 48"x6",
48"x8", 60"x6"

Rock & Frost Chain

24"x6", 24"x8", 36"x6",
36"x8", 42"x6", 42"x8",
48"x6", 48"x8", 60"x6"



Hydraulic Angle Sweeper

- » hydraulic angle
- » poly and stainless steel bristles
- » Eaton Char-Lynn motors

Sizes

4', 5', 6', 7', 8'



Pickup Bucket Sweeper Broom

- » Eaton Char-Lynn motor
- » steel and poly combo bristles
- » commercial bucket w/ 3/4" reversible bolt on cutting edge

Sizes

74", 84"



Land Leveler

- » replaceable 1/2" cutting edges
- » removable, replaceable screening for sifting, scooping material and rock
- » durable tube frame
- » optional scarifying teeth
- » top mounted bucket hooks

Without Teeth

68", 74", 78", 84"

With Teeth

68", 74", 78", 84"



Soil Conditioner

- » Eaton Char-Lynn hydraulic motor that is both standard & high flow ready
- » 10" drum spinner
- » 4"x8" heavy walled rectangular backbone

Sizes
6', 7'



Tiller

- » dual Eaton Char-Lynn motors
- » 4 swing away blades per spindle
- » bi-directional tilling
- » zero maintenance direct drive

Sizes
5', 6', 7'



Dozer Blade

- » full hydraulic tilt
- » 5/16" face plate gusseted throughout
- » reversible & replaceable bolt on cutting edge
- » commercial grade

Sizes
6', 7', 8'



Hydraulic Angle Snow Blade

- » full trip blade with dual cylinder hydraulic angle
- » adjustable blade height
- » bolt on replaceable cutting edge

Sizes
6', 7', 8', 9', 10'



Super Winged Hydraulic Angle Snow Blade

- » 2' hydraulic wings
- » oscillating quick attach plate
- » full trip edge
- » full trip wing edges

Size + Wings
6' + 4', 7' + 4', 8' + 4'



Brush Mower

- » 1/4" HD free floating deck
- » Eaton Char-Lynn motor
- » easy to replace blades
- » wheel kit available
- » standard flow rate 14-25 gpm

Deck Size

5', 6', 7'

Add-Ons

Wheel Kit, Push Bar



Direct Drive Brush Mower

- » 1/4" HD free floating deck
- » Eaton Char-Lynn motor
- » 4 easy to replace blades
- » wheel kit available
- » standard flow rate 14-25 gpm
- » no gear box
- » 500 lbs flywheel for maximum brush clearing capability

Deck Size

6', 7'

Add-Ons

Wheel Kit, Push Bar



Tree Shear

- » 90° rotating head
- » AR 400 hardened cutting blade
- » 6" 42 ton cylinder

Configurations

Manual Rotate, Hydraulic Rotate



Post & Tree Puller

- » brush guard available
- » 3" x 3" tube frame
- » 1/2" steel teeth
- » 3000lb hydraulic cylinder
- » 17" opening

Configurations

Puller , Puller + Guard



Stump Bucket

- » 1/2" steel bucket
- » 12" wide bucket
- » replaceable pin on teeth
- » overall length 64"

Configurations

64" L



Stump Bucket Grapple

- » 1/2" steel bucket
- » overall length 64"
- » replaceable pin on teeth
- » serrated top edge

Configurations

64" L



Wood Splitter

inverted style 36" bite monster

- » 5" 30 ton cylinder and I-beam construction
- » single split AR-400 abrasion resistant blade

Configurations

One Size, 4 Way Blade



Concrete Hopper

commercial grade 3/4 yard

- » gusseting on all wear points
- » center mounted hydraulic controlled shoot
- » removable chute extension

Configurations

One Size



Stump Grinder

- » Eaton Char-Lynn motor
- » hydraulic swing & depth control
- » 25" diameter cutting wheel
- » carbide Greenteeth (rotate 3 times before replacing)
- » commercial 3/4" HD disc
- » case drain required

Configurations

One Size



Electromagnet

- » 7,700 lbs capacity
- » hydraulic generator electro magnet
- » case drain required

Configurations

One Size



Extendable Boom

- » 10' retracted length
- » 6' hydraulically operated second section and a 4' manually third section for a total of 20'
- » replaceable wear pads

Configurations

One Size



Ice Scraper

- » quickly removes frozen or hardened build up from solid surfaces
- » replaceable self sharpening disc
- » commercial grade frame

Configurations

One Size



Receiver Hitch

- » makes moving trailers, implements and goose necks easier
- » long snout enables easy visibility
- » top gussets strengthen hitch

Configurations

45" L



Quick Attach Plates

- » 5/16" thick plate
- » full and partial backer plates available

Configurations

Partial, Solid

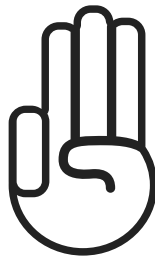


Why Choose Us



OUR PASSION

We have a proven record of accomplishment and are a reputable company in the United States. We ensure that all projects are built with reliable quality materials, while still offering clients support and accessibility.



OUR VALUES

For us, honesty is the only policy. We strive to complete all projects with integrity, not just with our clients, but also our suppliers and contractors. With thousands of successful projects under our belt, we are one of the most trusted manufacturing companies in the United States.



OUR MISSION

We commit ourselves to completing all projects within the timeline set with our clients. We use state-of-the-art technology and the best tools to ensure all of our jobs are done quickly while paying attention to even the smallest details to make sure everything is completed to the highest of standards.